

West Shelby

transmission line project



**EAST KENTUCKY
POWER COOPERATIVE**

A Touchstone Energy Cooperative 





About This Project

About the West Shelby substation and transmission line project.

This is a project to construct approximately 2 miles of 69-kilovolt transmission line from EKPC's existing Bekaert Substation to a new switching substation being built by Kentucky Utilities (KU) on U.S. 60 west of Shelbyville, adjacent to KU's existing Simpsonville-Shelbyville transmission line. East Kentucky Power Cooperative (EKPC) plans to purchase an easement for 100 feet of right-of-way for the transmission line.

Why does EKPC need to build this particular line?

This project will help to maintain service reliability for Shelby Energy Cooperative members in the vicinity. It will help to reduce outages and shorten the length of outages.

What approvals must be secured for this project?

Because EKPC plans to apply for project financing assistance from the U.S. Department of Agriculture, Rural Utilities Service (RUS), the proposed project constitutes a Federal action subject to review in accordance with Rural Development's (RD) Environmental Policy and Procedures for implementing the National Environmental Policy Act (7 CFR Part 1970). Per Section 1970.54 of these regulations, the proposed project meets the criteria for a Categorically Excluded proposal requiring the preparation of a site-specific Environmental Report (ER).

An adequate ER enables RUS to evaluate the environmental effects of a proposed categorically excluded project. It also enables RUS to fulfill its obligations under the National Environmental Policy Act of 1969 (NEPA), as amended, and other environmental mandates (i.e. National Historic Preservation Act, Endangered Species Act, etc.). RUS is solely responsible for determining the adequacy of the proposed project's environmental acceptability. The ER is intended to provide RUS officials with sufficient information to make a decision regarding the significance of the environmental impacts of its actions, based on an understanding of environmental consequences presented in the ER document.

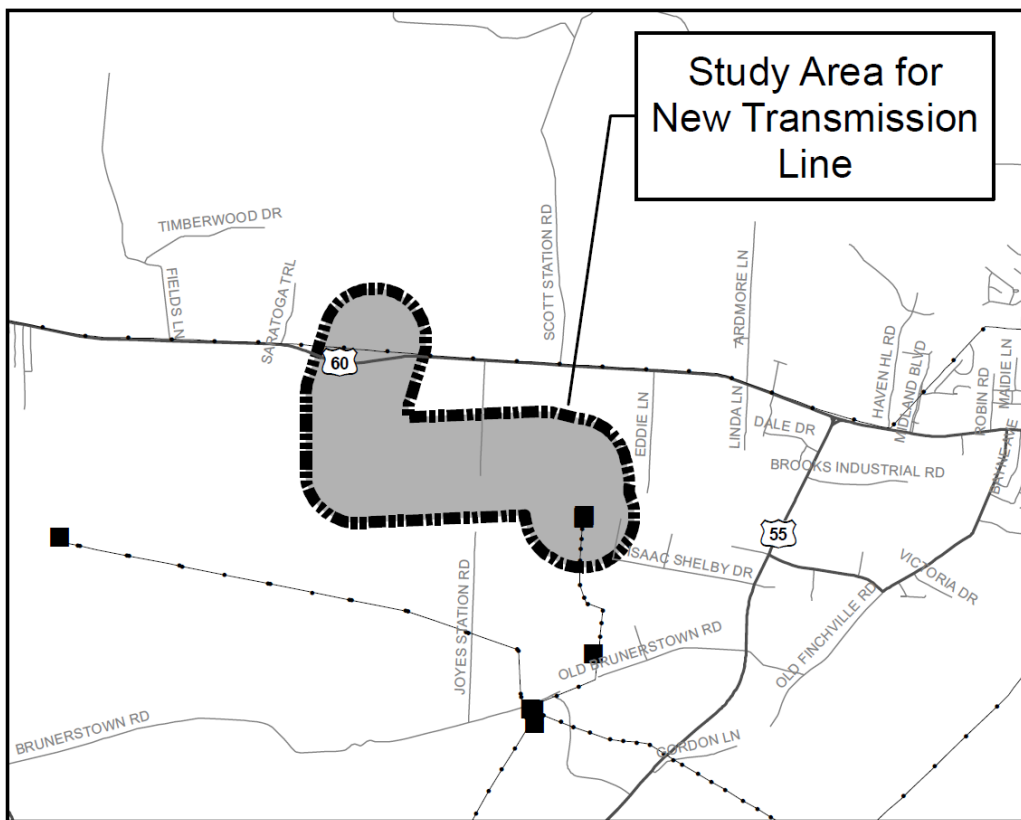




Line Location

Where will the line be located?

East Kentucky Power Cooperative (EKPC) plans to construct a new 69-kilovolt transmission line in Shelby County, within the study area displayed in the map below. The transmission line will run from EKPC's existing Bekaert Substation northwest to a new switching station to be built by Kentucky Utilities adjacent to its existing Simpsonville-Shelbyville transmission line, near U.S. 60 west of Shelbyville.

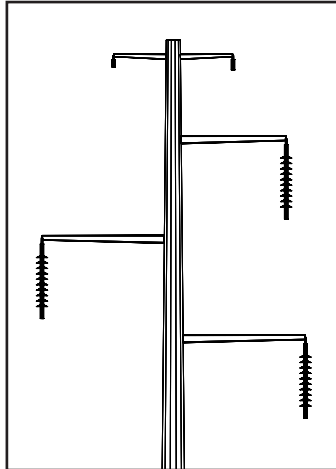




Line Appearance

What will the line look like?

This project will use single-pole construction. Below is a drawing of the typical structure that will be used for the project. EKPC plans to use steel poles for this project.



Project Schedule

Centerline established	Spring 2020
Property owners notified	Spring 2020
Right-of-way negotiations	Spring 2020
Design activity	Ongoing
Structure stakeout	Early 2021
Tree Clearing	Summer 2020
Construction	Early 2021





About Us

Winchester-based East Kentucky Power Cooperative is a not-for-profit electric utility that generates and transmits energy to 16 Touchstone Energy Cooperatives across the state. These cooperatives distribute the energy to more than 1.1 million people in Kentucky. Together, we work to improve the quality of life of those we serve



What a cooperative is

A cooperative is a not-for-profit business that is owned and democratically governed by its members. A co-op exists solely to serve its members.

What “not-for-profit” means

A not-for-profit cooperative is in business for the public good rather than for the financial benefit of an individual owner or stockholders.

Why we build power lines

Power lines are built to keep pace with growth in Kentucky. Power lines transport electricity like roads carry traffic. If there is too much traffic on a power line, though, the line overloads and people lose power. We build lines to avoid that problem.

Why we can't bury lines

While burying lines is more pleasing to the eye and protects them from ice and weather, the cost of burying lines is prohibitive. Line repairs are also extremely difficult and time consuming. It can cost as much as 10 times more to construct underground transmission lines.





The process we use to build lines

Soon, we'll finalize a centerline for the power line. Affected property owners will be notified. If your property is affected, we will seek permission to conduct a survey to confirm the centerline. Negotiations then begin on a payment to affected landowners for the right to run the line across their land. Our goal is always to minimize costs and the impact upon you and your community.

About rights of way

If your property is crossed by this project, EKPC will seek to purchase an easement that allows the cooperative to locate its poles and wires on your property, and to enter the property as needed for maintenance. The property owner will continue to own and use the property. The easement allows EKPC to clear and control trees within the right-of-way, as well as other trees that could interfere with transmission lines, and prevents structures from being constructed in the right-of-way.

How we value property

We conduct a market analysis of the area based on recent property sales and assess the impact the line would have on any particular property.

How we work with property owners

Our professionals will work with you respectfully, and we will work closely with each property owner who is affected by any phase of the construction. It is our goal to make sure that property owners are well-informed about the project and have ample opportunity to discuss it with us.

What about environmental impacts?

Our biologists do extensive work prior to project construction in order to assess the environmental impact. The biologists work to ensure EKPC minimizes and avoids impacting endangered plants and animals during line construction.





About Our System

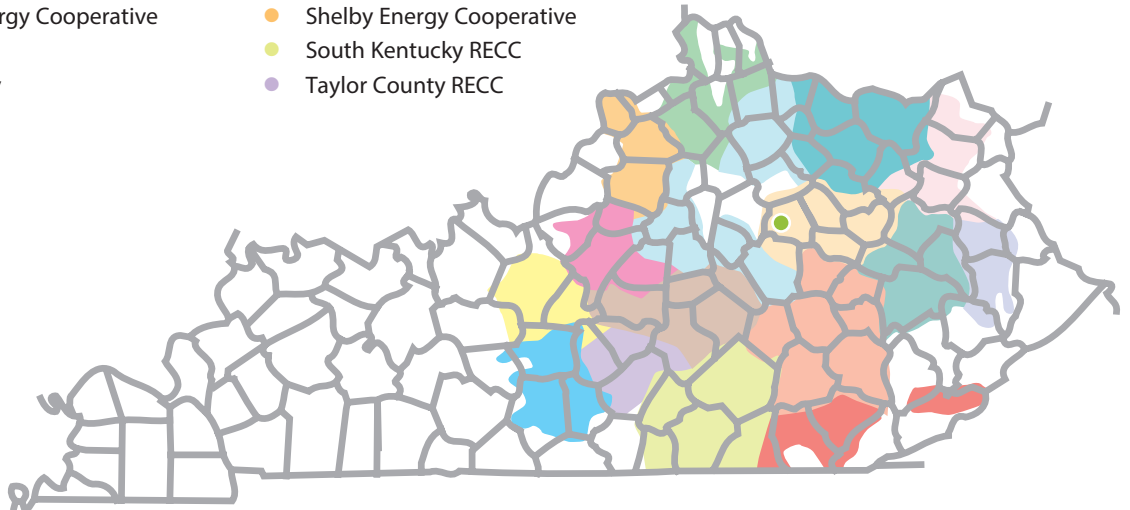
East Kentucky Power Cooperative Service area

EKPC is a not-for-profit generation and transmission utility with headquarters in Winchester. EKPC generates electric power and transports it to 16 locally-owned cooperatives that distribute it to 540,000 homes, farms, businesses and industries in 87 Kentucky counties, serving 1.1 million people. Together, EKPC and its owner-member cooperatives are known as Kentucky's Touchstone Energy Cooperatives.

EKPC's 16 owner-member cooperatives include:

- Big Sandy RECC
- Blue Grass Energy Cooperative
- Clark Energy Cooperative
- Cumberland Valley Electric
- Farmers RECC
- Fleming-Mason Energy Cooperative
- Grayson RECC
- Inter-County Energy
- Jackson Energy Cooperative
- Licking Valley RECC
- Nolin RECC
- Owen Electric Cooperative
- Salt River Electric Cooperative
- Shelby Energy Cooperative
- South Kentucky RECC
- Taylor County RECC

● EKPC headquarters





4775 Lexington Road, 40391
P.O. Box 707,
Winchester, KY 40392-0707
Telephone: 859-744-4812
Fax: 859-744-6008
www.ekpc.coop

